



Naperville Community Gardeners

Rosemary Holdredge, Editor
Mary Wright, Distribution

January 2007
Established 1980

Purpose: To nurture the gardening interests of its members and the community through educational programs and community service projects.

Next Meeting

Tuesday, January 9, 7 p.m.

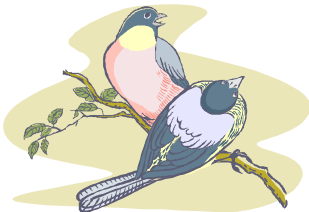
John Greene Realty
1311 S. Highway 59, Naperville
(Hwy 59 and Montgomery Rd/83rd St)

Speaker: **Chuck Brashears**
Wild Bird House
Naperville Plaza

Topic: **Attracting Birds to the Garden**

2006 Officers

President	Linda Thompson
Vice President	Logan Wasson
Secretary	Kristie Siuciak



January Program

Chuck Brashears of the Wild Bird House will present the January program about attracting birds to your garden. He will discuss the importance of ponds and plants in enticing birds to your yard and will review different kinds of seeds and food. Chuck is known for giveaways, so don't miss this meeting, bird lovers!

From the President

Season's Greetings!

Hope you are all looking forward to the start of our new year and our first meeting. That meeting will be **Tuesday, January 9. We had to change the date from our usual Monday because of a conflicting meeting at John Greene. I'm sorry if this creates an inconvenience. We will have two other Tuesday evening meetings as well. Here is our 2007 schedule.**

Jan 9 (Tuesday)
Feb 5
March 5
April 2
May 8 (Tuesday)
June 4
July- no meeting (picnic)
August 6
September 11 (Tuesday)
October 1

Logan Wasson is working on some great speakers, and I'm sure he will have some great topics for us.

A big thank you to Wanda Wohead for a terrific fall banquet. Everyone enjoyed the lovely location and the fun of winning some great prizes including the coveted suet (maybe you had to be there) on the garden bingo.

I'm trying to collect a list of all the club assets (besides of course our wonderful members). If you have any items that belong to the club, please let me know so we can put them on the list. I remind everyone that we do have a storage unit, so if you want to get the items out of your garage, basement, or yard, let me know and we can make arrangements to take the items to our storage.

Finally, one of our founding club members, Dean Davis, passed away this October. Our club sent flowers in tribute. His obituary included his role in founding our club and the great fondness he had for our club.

Have a wonderful holiday season and looking forward to seeing you in January!

Linda Thompson, President

Treasurer's Report

	2006	%	TOTAL		OCT	NOV	DEC
	BUDGET		YR TO DATE	VARIANCE			
REVENUES AND RESERVES							
01 01	Members Dues		\$1,215.00	7.4%	\$0.00	(\$1,215.00)	
01 02	Members Banquet Tickets		\$1,000.00	6.1%	\$0.00	(\$1,000.00)	
01 03	Members T-Shirt Sales		\$100.00	0.6%	\$0.00	(\$100.00)	
	SUB-TOTAL MEMBERS REVENUE		\$2,315.00	14.1%	\$0.00	(\$2,315.00)	\$0.00
01 04	Plant Sale: Vendors		\$9,000.00	54.9%	\$0.00	(\$9,000.00)	
01 05	Plant Sale: Members		\$3,500.00	21.4%	\$0.00	(\$3,500.00)	
01 06	Misc. Revenues		\$150.00	0.9%	\$0.00	(\$150.00)	
01 07	Interest		\$75.00	0.5%	\$5.87	(\$69.13)	\$3.43
	SUB-TOTAL FUND-RAISING/MISC.		\$12,725.00	77.6%	\$5.87	(\$12,719.13)	\$3.43
	TOTAL REVENUES		\$15,040.00	91.8%	\$5.87	(\$15,034.13)	\$3.43
01 08	Transfer from Reserves		\$1,350.00	8.2%	\$0.00	(\$1,350.00)	
	TOTAL REVENUE AND RESERVES		\$16,390.00	100.0%	\$5.87	(\$16,384.13)	\$3.43

EXPENSES AND RESERVES							
02 01	Members Picnic		\$350.00	2.1%	\$0.00	\$350.00	
02 02	Members Banquet		\$1,350.00	8.2%	\$803.14	\$546.86	\$803.14
02 03	Members Name Tags		\$35.00	0.2%	\$0.00	\$35.00	
02 04	Members Recognition Fund		\$175.00	1.1%	\$75.34	\$99.66	\$75.34
02 05	Members T-Shirts		\$100.00	0.6%	\$0.00	\$100.00	
02 06	Bus Trip		\$350.00	2.1%	\$0.00	\$350.00	
	SUB-TOTAL MEMBERS BENEFITS		\$2,360.00	14.4%	\$878.48	\$1,481.52	\$75.34
02 07	Bank Charges		\$5.00	0.0%	\$0.00	\$5.00	
02 08	Club Maintenance Costs		\$10.00	0.1%	\$0.00	\$10.00	
02 09	Door Prizes/Mini Show		\$50.00	0.3%	\$0.00	\$50.00	
02 10	Refreshments		\$150.00	0.9%	\$0.00	\$150.00	
02 11	Misc. Expenses		\$0.00	0.0%	\$250.00	(\$250.00)	\$250.00
02 12	Newsletter		\$150.00	0.9%	\$0.00	\$150.00	
02 13	Program Speakers		\$1,200.00	7.3%	\$119.18	\$1,080.82	\$119.18
02 14	Publicity and Website		\$145.00	0.9%	\$21.95	\$123.05	\$21.95
02 15	Photography Supplies		\$20.00	0.1%	\$0.00	\$20.00	
02 16	Flower & Garden Show		\$1,000.00	6.1%	\$0.00	\$1,000.00	
	SUB-TOTAL CLUB ACTIVITIES		\$2,730.00	16.7%	\$391.13	\$2,338.87	\$141.13
02 17	Donations to 5 HS(\$500 ea.)		\$2,600.00	15.9%	\$2,500.00	\$100.00	\$2,500.00
02 18	Donation to Riverwalk		\$500.00	3.1%	\$0.00	\$500.00	
	SUB-TOTAL DONATIONS		\$3,100.00	18.9%	\$2,500.00	\$600.00	\$2,500.00
02 19	Plant Sale: Vendors		\$8,000.00	48.8%	\$0.00	\$8,000.00	
02 20	Plant Sale: Members		\$200.00	1.2%	\$0.00	\$200.00	
	SUB-TOTAL FUNDRAISERS		\$8,200.00	50.0%	\$5,391.13	\$2,808.87	\$0.00
	TOTAL EXPENSES		\$16,390.00	100.0%	\$3,769.61	\$12,620.39	\$2,716.47
02 21	Transfer to Reserves		\$0.00	0.0%	\$0.00	\$0.00	
	TOTAL EXPENSES AND RESERVES		\$16,390.00	100.0%	\$3,769.61	\$12,620.39	\$2,716.47
	NET INCOME (LOSS)		\$0.00		(\$3,763.74)	(\$3,763.74)	(\$2,713.04)

AS OF LAST POSTING:

BALANCE: BEGINNING OF YEAR	\$12,282.05	\$13,110.42	\$10,397.38	\$9,346.68
+ RECEIPTS	\$5.87	\$3.43	\$2.44	\$0.00
- DISBURSEMENTS	\$3,769.61	\$2,716.47	\$1,053.14	\$0.00
BALANCE: END OF MONTH	\$8,518.31	\$10,397.38	\$9,346.68	\$9,346.68

CURRENT BANK BALANCES

	AS OF 11/30/06
SAVINGS BALANCE	\$9,918.02
CHECKING BALANCE	\$2,031.80
2005 BUDGET OUTSTANDING	\$0.00
2006 CHECKS OUTSTANDING	\$2,603.14
END-OF-MONTH BALANCE	\$9,346.68